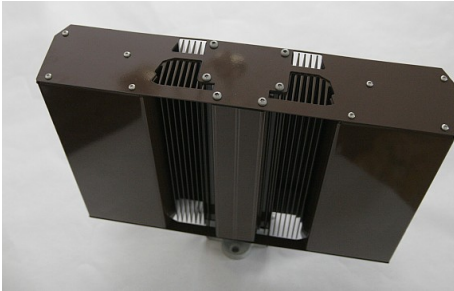




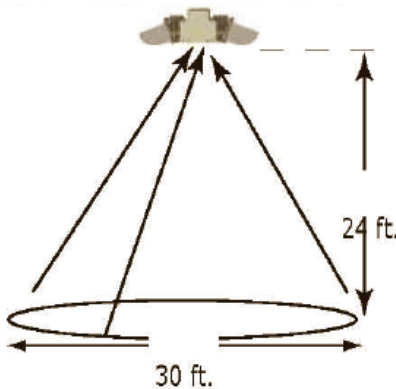
PL-50 Parking Lot Light

LED luminaire for parking lots, garage roof decks, and other outdoor uses.



PL-50, High Efficiency Solid State Luminaire, Saving 44% to 66% over traditional Metal Halide or High Pressure Sodium Fixtures.

Design Light Consortium Listed



Patented integral down looking photo control, using IR detection to prevent day burning. Photocell requires no openings in the housing, no wiring and is designed for the life of the fixture.

U.S. and International Patents Issued and Pending.
 US 7,419,128 B1, US 7,569,802 B1,
 US 7,578,605 B1, US 7,806,563 B1

Overview:

The PL-50 Street Lighting system is a United States manufactured, LED luminaire well suited to parking lots, upper roof decks of parking garages, and other outdoor applications where rugged conditions are found. The IntenCity PL-50 contains a high efficiency light engine, driver electronics to maximize power utilization, and thermal management to prolong the life of the lighting fixture. The LED luminaire is constructed of high quality materials for low maintenance, vandal resistance and long service life.

Applications:

Typical applications for the PL-50 solid state lighting system include:

- Parking Lots
- Roof Decks of Parking Garages
- Rugged outdoor lighting conditions
- Other places where traditional 150 to 250 watt Metal Halide and High Pressure Sodium lights have been used
- Quick mounting hardware to standard 1.5" or 2" pipe fittings for ease of installation.

Features:

- High output LED light engine delivering 5,260 lumens
- White LED light engine with proprietary patented directional optics for maximum coverage with low numbers of fixtures.
- Patented thermal management system to prolong LED life, protect the electronics and maintain lumen output over the long life of the fixture.
- High power factor current regulated, low THD solid-state power supply, encapsulated for weather resistance. Integral transient protection.
- Low Effective Projected Area for low wind load on the luminaire. Wind tunnel tested to 150 MPH.
- Sealed light engine with no air intake, requiring no cleaning.

Full LM-79, LM-80 reports and IES files available to aid in engineering and design.



RESULTS OF TESTS (cont'd)

Photometric Measurements at 25°C - Integrating Sphere Method

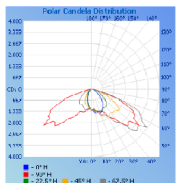
Intertek Sample No.	Color Temperature (K)	Color CRI	Color R9	Current (A)	Current Div	Current ATCO (%)	CIE S1 Chromaticity (x)	CIE S1 Chromaticity (y)	CIE T6 Chromaticity (x)	CIE T6 Chromaticity (y)
F11554L	6490	76.9	-0.8	0.003	8.63	PL-50	0.313	0.328	0.198	0.468

Photometric and Electrical Measurements - Distribution Method

Intertek Sample No.	Base Orientation	Input Voltage (Volts)	Input Current (Amps)	Input Power (Watts)	Input Power Factor	Absolute Lumen Flux (Lumens)	Lumen Efficacy (Lumens Per Watt)
F11554L	UP	120.0	739.1	88.23	0.995	5259	59.61

Intensity (Candelas) Summary at 25°C - Candela

Angle	0	22.5	45	67.5	90
0	1251	1251	1251	1251	1251
5	1348	1317	1272	1224	1187
10	1454	1388	1328	1264	1210
15	1507	1389	1472	1465	1387
20	1528	1426	1621	1643	1464
25	1458	1429	1807	1889	1491
30	1333	1412	1874	1792	1796
35	1217	1405	1827	2044	2120
40	1046	1394	1817	2081	2560
45	809	1389	1856	2434	2956
50	606	1108	1901	3462	3016
55	432	915	1994	2819	2026
60	308	725	1554	3327	2825
65	208	550	1019	2948	2207
70	126	385	600	1616	1559
75	89	147	165	491	328
80	24	33	59	88	63
85	5	6	10	17	12
90	0	0	0	0	0



Compatibility Chart / Energy Savings

Traditional Source	PL-50	Energy Savings
HPS 150 watts	88 watts	44%
MH 150 watts	88 watts	44%
HPS 250 watts	88 watts	66%
MH 250 watts	88 watts	66%

PL-50 Parking Lot Light Specifications

Solid-State Outdoor LED Luminaire



The PL-50 provides effective lighting in parking lots applications and upper decks of parking garage structures.



General Specifications

General	Light-weight fixture, sharp optical cutoff with limited light trespass, non-glare light engine.
Light Output	5,260 Lumens @ 88 watts, 60 Lumens/ watt
Durability, Dust, and Moisture	Intrusion Protection Rating – IP66 on light engine, photo controls, and power supply. Thermal Fold-Back driver to protect LED's in extreme temperature applications. Patented thermal design.
Color	6,500K Typical, other options available, CRI 77
Photo Control	On < 1 foot candle, Off at > 1.5 foot candle, Patented downward looking design.
L-70 Lifetime/ Warranty	10+ Year Design Life, over 70% of original lumen output after 70,000 hours at 30° C ambient temperature. Manufacturer warrants products to be free of defect for a period of 5 years.

Environmental Specifications

Operating Temperature	-40° C to 55° C
Storage Temperature	-40° C to 85° C
Humidity	0% to 99%

Power and Compliance Standards

Input Power	PF> 0.95, Current THD <10%
Wattage	88 watts
Operating Voltage	100 to 277VAC, 50 to 60 hertz, 15 to 36VDC low voltage applications available (e.g. Solar).
LED Driver Current	800mA
Connections	3 wire: line, neutral and ground
Codes and Standards	NEC, NEMA, FCC Part 15 Class B, UL 1598 and 1870

Physical Specifications

Finish and Construction	Clear Anodized Aluminum, and Stainless Steel. Heavy gauge aluminum extrusion, clear anodized finish, stainless steel fasteners, Injected molded, gasket sealed polycarbonate lens with UV inhibitor. Lower compartment opens for electrical connections and installation.
Dimensions	4 3/8" H x 12 1/2" W x 11" L
Weight	16 Pounds

Ordering Information:

Family	Watts	Voltage	Color Temp.	Distribution	Photo Control	Color	Mount
PL50	88 Watts Other wattages available	100 – 277 VAC Low Voltage 15 0 26 VDC Custom: Contact Factory	4,100K 5,000K 6,500K	Type II Type III Type IV	Enabled Disabled	Silver Custom Color: Contact Factory	Pipe Mount: 1.5" - 2.0" 1.25" - 1.5" Custom: Contact Factory



Contact Information:
 Phone: 1.518.409.8090
 Fax: 1.518.409.8091
 eMail: info@IntenCityLighting.com
 Web: www.IntenCityLighting.com

Efficient, economical, highly engineered light fixtures saving our customer's energy