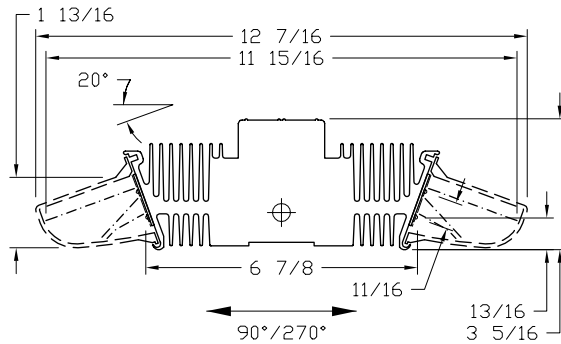
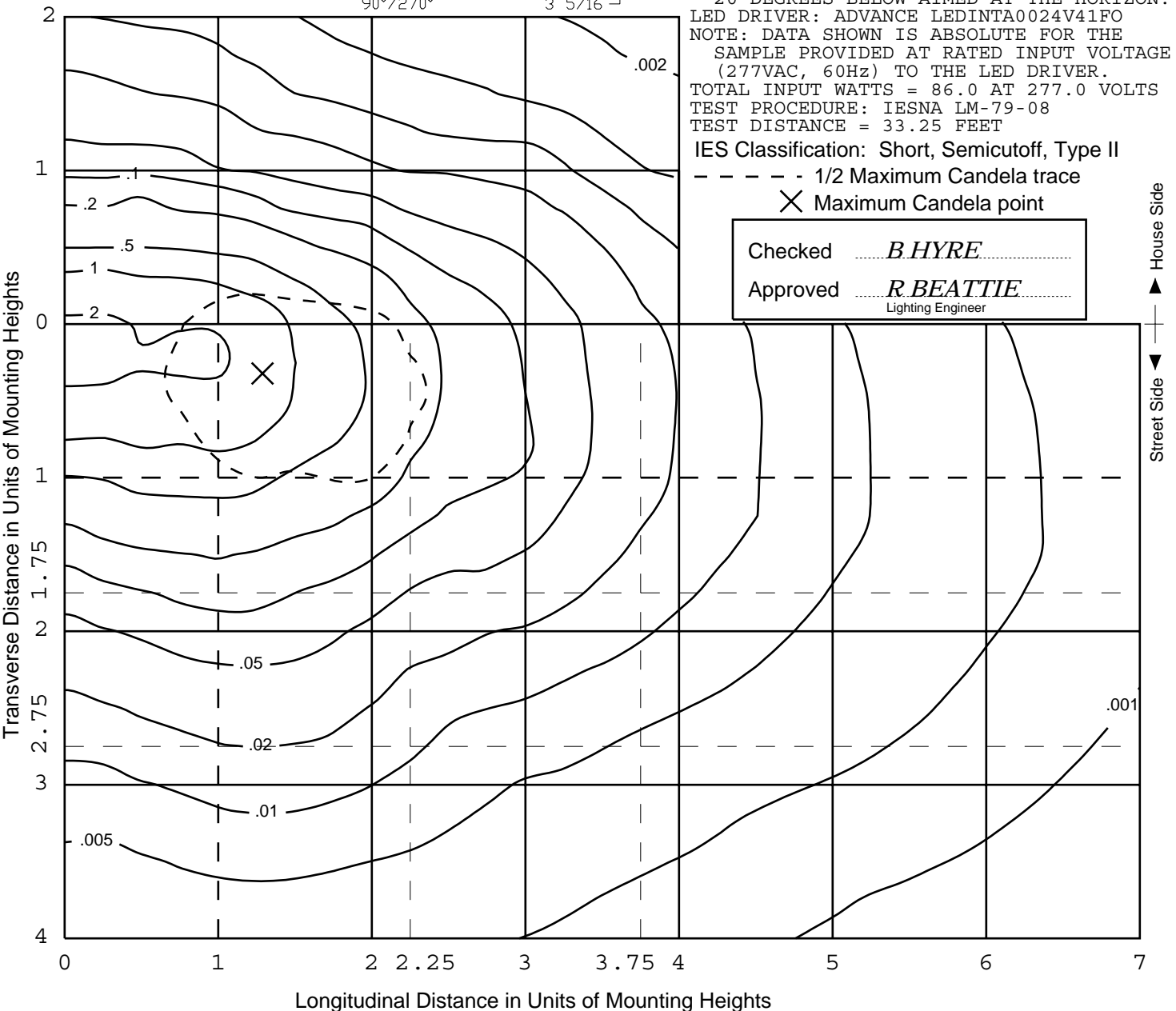




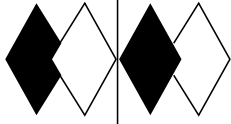
**ISOFOOTCANDLE LINES OF HORIZONTAL ILLUMINATION**  
Values based on 24 foot mounting height.



REPORT NUMBER: ITL68045  
ISSUE DATE: 03/24/11 PAGE: 1 OF 7  
PREPARED FOR: INTENSITY LIGHTING, INC.  
CATALOG NUMBER: SL50  
LUMINAIRE: EXTRUDED FINNED DIFFUSE METAL HOUSING/HEAT SINK WITH FLAT METAL END CAPS AND TWO DISTINCT OPTICAL COMPARTMENTS. EACH OPTICAL COMPARTMENT CONSISTS OF: ONE CIRCUIT BOARD WITH 32 LEDS, FABRICATED SEMI-SPECULAR METAL REFLECTOR, CLEAR PLASTIC LENS WITH LINEAR PRISMATIC TOP. LENS PRISMS IN AND PERPENDICULAR TO THE 0-DEGREE PLANE.  
LAMPS: SIXTY-FOUR WHITE LIGHT EMITTING DIODES (LEDS) EACH WITH CLEAR HEMISPHERICAL INTEGRAL LENS, TILTED 20-DEGREES BELOW AIMED AT THE HORIZON.  
LED DRIVER: ADVANCE LEDINTA0024V41FO  
NOTE: DATA SHOWN IS ABSOLUTE FOR THE SAMPLE PROVIDED AT RATED INPUT VOLTAGE (277VAC, 60Hz) TO THE LED DRIVER.  
TOTAL INPUT WATTS = 86.0 AT 277.0 VOLTS  
TEST PROCEDURE: IESNA LM-79-08  
TEST DISTANCE = 33.25 FEET

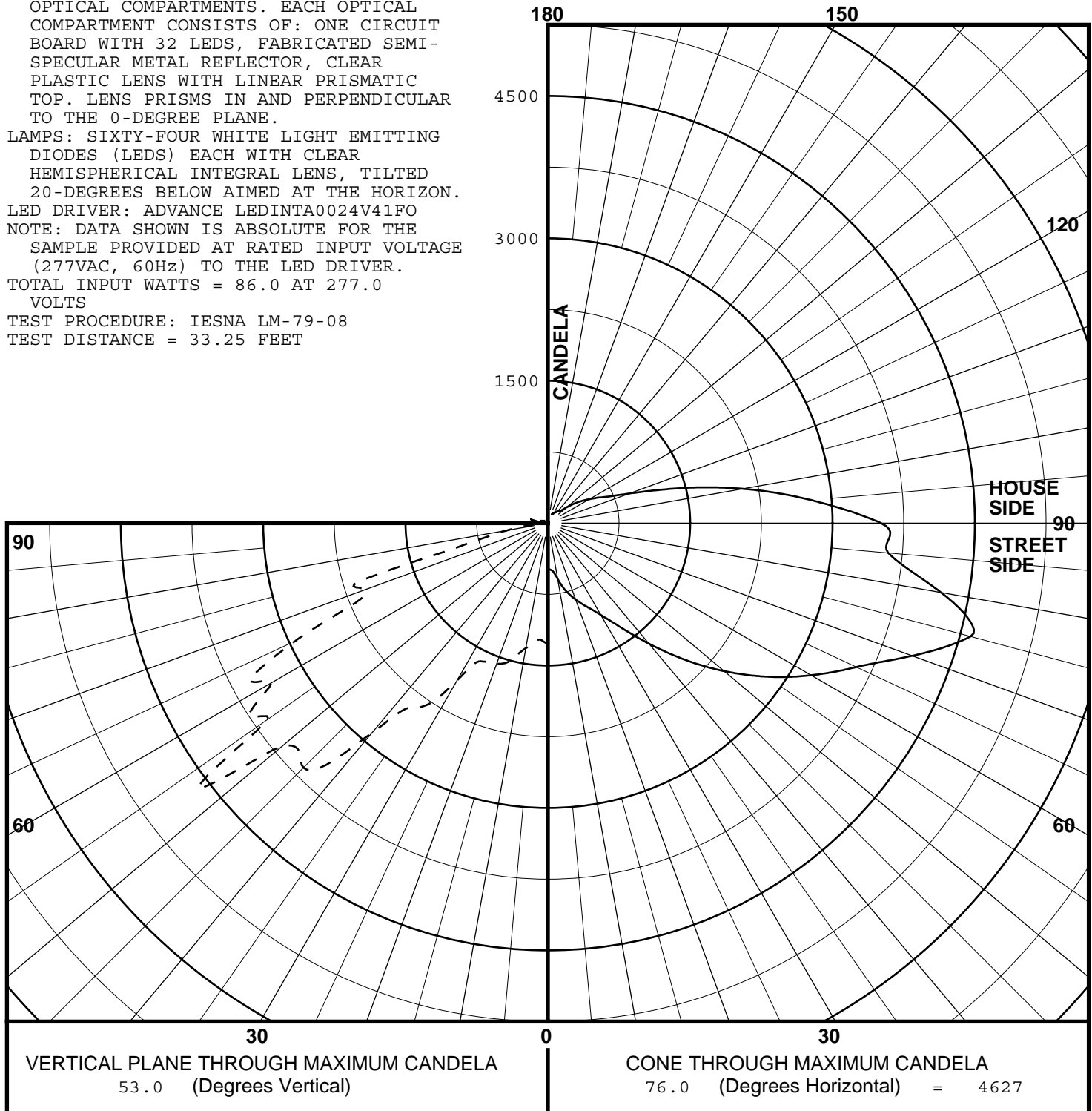


Checked B. HYRE  
Approved R. BEATTIE  
Lighting Engineer



REPORT NUMBER: ITL68045  
 ISSUE DATE: 03/24/11 PAGE: 2 OF 7  
 PREPARED FOR: INTENCITY LIGHTING, INC.  
 CATALOG NUMBER: SL50  
 LUMINAIRE: EXTRUDED FINNED DIFFUSE  
 METAL HOUSING/HEAT SINK WITH FLAT  
 METAL END CAPS AND TWO DISTINCT  
 OPTICAL COMPARTMENTS. EACH OPTICAL  
 COMPARTMENT CONSISTS OF: ONE CIRCUIT  
 BOARD WITH 32 LEDS, FABRICATED SEMI-  
 SPECULAR METAL REFLECTOR, CLEAR  
 PLASTIC LENS WITH LINEAR PRISMATIC  
 TOP. LENS PRISMS IN AND PERPENDICULAR  
 TO THE 0-DEGREE PLANE.  
 LAMPS: SIXTY-FOUR WHITE LIGHT EMITTING  
 DIODES (LEDS) EACH WITH CLEAR  
 HEMISPHERICAL INTEGRAL LENS, TILTED  
 20-DEGREES BELOW AIMED AT THE HORIZON.  
 LED DRIVER: ADVANCE LEDINTA0024V41FO  
 NOTE: DATA SHOWN IS ABSOLUTE FOR THE  
 SAMPLE PROVIDED AT RATED INPUT VOLTAGE  
 (277VAC, 60Hz) TO THE LED DRIVER.  
 TOTAL INPUT WATTS = 86.0 AT 277.0  
 VOLTS  
 TEST PROCEDURE: IESNA LM-79-08  
 TEST DISTANCE = 33.25 FEET

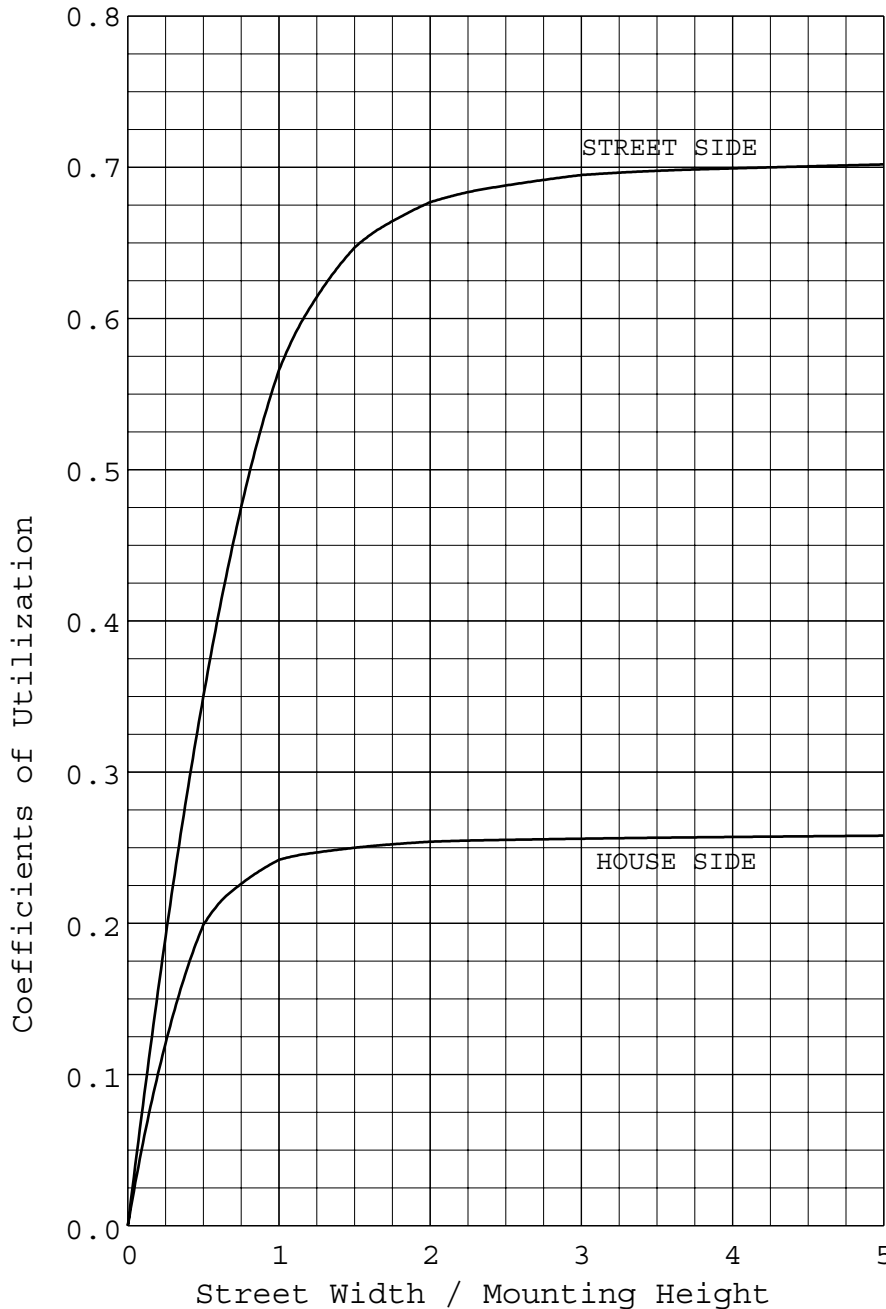
MAXIMUM PLANE AND MAXIMUM CONE PLOTS OF CANDELA



REPORT NUMBER: ITL68045  
ISSUE DATE: 03/24/11  
PREPARED FOR: INTENCITY LIGHTING, INC.

PAGE: 3 OF 7

COEFFICIENTS OF UTILIZATION AND FLUX DISTRIBUTION



	LUMENS	PERCENT OF FIXTURE
DOWNWARD STREET SIDE	4001	70.4
DOWNWARD HOUSE SIDE	1503	26.4
DOWNWARD TOTAL	5504	96.8
UPWARD STREET SIDE	114	2.0
UPWARD HOUSE SIDE	68	1.2
UPWARD TOTAL	182	3.2
TOTAL FLUX	5686	100.0
EFFICACY = 66.1 Lm/W		

ALL CANDELA AND LUMENS IN THIS REPORT ARE BASED ON ABSOLUTE PHOTOMETRY. THE COEFFICIENT OF UTILIZATION VALUES ARE BASED ON THE TOTAL ABSOLUTE LUMEN OUTPUT OF THIS LUMINAIRE SAMPLE.



INDEPENDENT TESTING LABORATORIES, INC.  
3386 LONGHORN ROAD, BOULDER, CO 80302 USA

PHONE: (303)442-1255 • FAX: (303)449-5274 • E-MAIL: itl@itlboulder.com • WEBSITE: www.itlboulder.com

REPORT NUMBER: ITL68045  
ISSUE DATE: 03/24/11  
PREPARED FOR: INTENCITY LIGHTING, INC.

PAGE: 4 OF 7

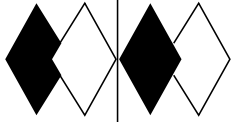
FLUX DISTRIBUTION BY SOLID ANGLE

(PER IESNA TM-15-07, LUMINAIRE CLASSIFICATION SYSTEM FOR OUTDOOR LUMINAIRES)

	LUMENS	PERCENT OF FIXTURE	BUG ZONE RATINGS
FORWARD LIGHT	4001.	70.4	
FL ( 0- 30)	646.5	11.4	
FM ( 30- 60)	2316.7	40.7	
FH ( 60- 80)	985.6	17.3	G1
FVH( 80- 90)	52.2	0.9	U1 G1
BACK LIGHT	1503.	26.4	
BL ( 0- 30)	398.9	7.0	B1
BM ( 30- 60)	822.1	14.5	B1
BH ( 60- 80)	262.6	4.6	B1 G1
BVH( 80- 90)	19.1	0.3	U1 G1
UPLIGHT	182.	3.2	
UL ( 90-100)	42.7	0.8	U2
UH (100-180)	139.5	2.5	U3
TRAPPED LIGHT	0.	0.0	
TOTAL FLUX	5686.	100.0	

BACKLIGHT, UPLIGHT, AND GLARE (BUG) RATINGS  
(PER ADDENDUM A FOR IESNA TM-15-07)

BUG RATING: B1 U3 G1



REPORT NUMBER: ITL68045  
 ISSUE DATE: 03/24/11  
 PREPARED FOR: INTENCITY LIGHTING, INC.

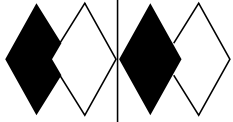
PAGE: 5 OF 7

CANDELA TABULATION

	LATERAL ANGLE											
	0.0	5.0	15.0	25.0	35.0	45.0	55.0	65.0	75.0	76.0	85.0	
	180.0	14.	14.	14.	14.	14.	14.	14.	14.	14.	14.	14.
	175.0	13.	14.	15.	15.	15.	15.	15.	15.	15.	16.	14.
	165.0	11.	12.	14.	15.	18.	19.	20.	21.	22.	26.	24.
	155.0	12.	13.	16.	19.	18.	17.	17.	18.	21.	23.	23.
	145.0	13.	14.	18.	18.	16.	18.	18.	21.	25.	28.	27.
	135.0	16.	15.	14.	16.	17.	20.	25.	25.	29.	33.	33.
	125.0	10.	11.	10.	14.	18.	23.	28.	35.	46.	45.	52.
	115.0	8.	8.	9.	12.	20.	29.	33.	48.	64.	58.	68.
	105.0	8.	9.	11.	14.	24.	32.	72.	122.	156.	132.	128.
	95.0	13.	14.	21.	29.	62.	104.	41.	51.	50.	46.	43.
	92.5	14.	16.	25.	38.	40.	39.	43.	54.	60.	55.	51.
	90.0	19.	20.	31.	41.	36.	39.	52.	67.	80.	75.	66.
	87.5	22.	24.	32.	35.	41.	49.	64.	92.	107.	107.	94.
	85.0	29.	30.	38.	43.	56.	67.	86.	127.	154.	156.	139.
V	82.5	41.	41.	51.	57.	81.	94.	129.	186.	250.	244.	210.
E	80.0	57.	59.	75.	83.	119.	139.	183.	317.	408.	433.	368.
R	77.5	80.	76.	115.	118.	170.	202.	301.	500.	689.	650.	586.
T	75.0	108.	103.	161.	226.	280.	274.	470.	798.	992.	992.	943.
I	72.5	134.	132.	210.	357.	433.	414.	605.	1559.	2255.	2141.	1560.
C	70.0	162.	172.	267.	454.	626.	712.	871.	1427.	2000.	2057.	2119.
A	67.5	188.	217.	314.	529.	748.	944.	1406.	1976.	2227.	2197.	2022.
L	65.0	226.	260.	369.	603.	919.	1075.	1751.	2729.	2981.	2941.	2589.
	62.5	264.	306.	430.	683.	1046.	1298.	1925.	2904.	3511.	3525.	3173.
A	60.0	306.	346.	498.	739.	1150.	1581.	2135.	3089.	3374.	3358.	3098.
N	57.5	360.	398.	592.	826.	1245.	1774.	2769.	3293.	3745.	3730.	3326.
G	55.0	417.	452.	673.	909.	1296.	1930.	2747.	4082.	3613.	3597.	3259.
L	53.0<<	478.	500.	740.	971.	1341.	2030.	2820.	3587.	4611.	4627.	3602.
E	52.5	487.	519.	755.	990.	1358.	2041.	2844.	3557.	4466.	4570.	3944.
	50.0	570.	602.	812.	1091.	1430.	1993.	2977.	3481.	3659.	3649.	3297.
	47.5	678.	683.	857.	1197.	1497.	1882.	2907.	3687.	3603.	3555.	3183.
	45.0	777.	769.	906.	1293.	1521.	1871.	2551.	3488.	3664.	3643.	3409.
	42.5	885.	860.	970.	1360.	1568.	1879.	2366.	3108.	3465.	3450.	3151.
	40.0	1013.	954.	1014.	1393.	1626.	1844.	2342.	2590.	2794.	2879.	2868.
	37.5	1111.	1060.	1049.	1401.	1700.	1826.	2291.	2468.	2471.	2465.	2344.
	35.0	1201.	1140.	1091.	1395.	1766.	1849.	2048.	2374.	2377.	2374.	2253.
	30.0	1309.	1271.	1189.	1403.	1802.	1898.	1874.	1807.	1923.	1909.	1909.
	25.0	1443.	1415.	1329.	1417.	1696.	1871.	1818.	1732.	1619.	1608.	1532.
	20.0	1541.	1514.	1419.	1431.	1521.	1675.	1763.	1699.	1584.	1576.	1514.
	15.0	1528.	1519.	1438.	1409.	1446.	1487.	1511.	1528.	1497.	1497.	1457.
	10.0	1487.	1482.	1428.	1377.	1363.	1376.	1368.	1369.	1334.	1337.	1314.
	5.0	1392.	1398.	1372.	1347.	1322.	1294.	1267.	1255.	1234.	1236.	1223.
	0.0	1273.	1273.	1273.	1273.	1273.	1273.	1273.	1273.	1273.	1273.	1273.

PLANE OF MAXIMUM CANDELA

CONE OF MAXIMUM CANDELA



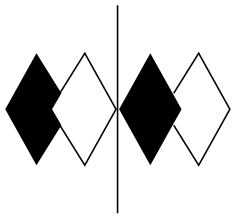
REPORT NUMBER: ITL68045  
 ISSUE DATE: 03/24/11  
 PREPARED FOR: INTENCITY LIGHTING, INC.

PAGE: 6 OF 7

CANDELA TABULATION

	HOUSE SIDE		LATERAL ANGLE								
	90.0	95.0	105.0	115.0	125.0	135.0	145.0	155.0	165.0	175.0	180.0
180.0	14.	14.	14.	14.	14.	14.	14.	14.	14.	14.	14.
175.0	15.	14.	15.	15.	16.	15.	15.	15.	15.	14.	13.
165.0	24.	25.	23.	23.	21.	20.	18.	16.	15.	13.	12.
155.0	23.	24.	23.	22.	20.	20.	18.	18.	15.	13.	12.
145.0	28.	27.	26.	25.	21.	19.	16.	15.	15.	13.	12.
135.0	35.	32.	29.	26.	24.	18.	14.	12.	11.	11.	11.
125.0	55.	46.	33.	24.	25.	16.	12.	10.	8.	9.	8.
115.0	67.	57.	32.	27.	19.	14.	11.	8.	7.	7.	6.
105.0	121.	107.	78.	28.	21.	17.	10.	8.	6.	6.	5.
95.0	40.	34.	26.	23.	22.	25.	21.	12.	6.	5.	4.
92.5	48.	39.	27.	22.	22.	24.	21.	15.	7.	5.	4.
90.0	63.	50.	32.	23.	22.	25.	21.	18.	9.	6.	7.
87.5	83.	64.	35.	25.	21.	22.	19.	16.	10.	6.	6.
85.0	119.	94.	46.	32.	25.	24.	19.	16.	11.	10.	10.
V 82.5	189.	135.	64.	40.	30.	27.	22.	16.	18.	14.	13.
E 80.0	306.	221.	89.	54.	38.	30.	24.	19.	25.	19.	19.
R 77.5	509.	346.	139.	70.	48.	35.	27.	27.	30.	25.	25.
T 75.0	787.	556.	205.	96.	59.	41.	35.	35.	37.	32.	32.
I 72.5	1462.	1065.	417.	126.	70.	49.	43.	41.	45.	41.	41.
C 70.0	1774.	1352.	460.	148.	78.	56.	49.	49.	51.	46.	48.
A 67.5	1763.	1337.	541.	172.	92.	64.	59.	61.	57.	56.	54.
L 65.0	2318.	1777.	802.	223.	111.	73.	67.	68.	62.	61.	64.
62.5	2783.	2184.	916.	287.	137.	88.	78.	72.	64.	67.	70.
A 60.0	2812.	2298.	1052.	371.	169.	103.	89.	76.	70.	73.	76.
N 57.5	3043.	2449.	1121.	490.	226.	123.	103.	83.	76.	83.	86.
G 55.0	3032.	2527.	1325.	594.	299.	151.	119.	91.	83.	91.	92.
L 53.0<<	3512.	2785.	1417.	651.	385.	182.	142.	102.	91.	96.	99.
E 52.5	3711.	3028.	1415.	666.	396.	186.	145.	107.	91.	97.	99.
50.0	3095.	2646.	1519.	750.	487.	252.	174.	127.	100.	105.	108.
47.5	2996.	2610.	1618.	828.	546.	315.	224.	153.	116.	113.	111.
45.0	3191.	2769.	1659.	896.	580.	379.	288.	204.	134.	126.	124.
42.5	2982.	2640.	1657.	960.	602.	417.	355.	256.	161.	146.	146.
40.0	2689.	2469.	1571.	1014.	618.	452.	425.	299.	189.	175.	185.
37.5	2240.	2095.	1498.	1048.	643.	490.	476.	334.	220.	215.	229.
35.0	2141.	2006.	1493.	1038.	697.	537.	517.	352.	255.	258.	274.
30.0	1858.	1755.	1387.	1017.	849.	697.	580.	385.	322.	333.	344.
25.0	1482.	1439.	1302.	1108.	981.	880.	694.	489.	427.	427.	427.
20.0	1474.	1433.	1355.	1208.	1076.	938.	771.	638.	611.	613.	615.
15.0	1425.	1401.	1358.	1247.	1108.	954.	836.	777.	767.	767.	777.
10.0	1288.	1275.	1242.	1186.	1115.	1037.	987.	947.	952.	941.	962.
5.0	1208.	1199.	1188.	1167.	1158.	1140.	1137.	1122.	1138.	1134.	1153.
0.0	1273.	1273.	1273.	1273.	1273.	1273.	1273.	1273.	1273.	1273.	1273.

CONE OF MAXIMUM CANDELA



**itl boulder**  
THE LIGHT CENTER OF THE INDUSTRY SINCE 1955



INDEPENDENT TESTING LABORATORIES, INC.  
3386 LONGHORN ROAD, BOULDER, CO 80302 USA

PHONE: (303)442-1255 • FAX: (303)449-5274 • E-MAIL: [itl@itlboulder.com](mailto:itl@itlboulder.com) • WEBSITE: [www.itlboulder.com](http://www.itlboulder.com)

REPORT NUMBER: ITL68045  
ISSUE DATE: 03/24/11  
PREPARED FOR: INTENCITY LIGHTING, INC.

PAGE: 7 OF 7

ADDRESS: 22922 N STATE HIGHWAY 7  
DARDANELLE, AR 72834-0750

THIS ITL REPORT WITH THE USE OF THE NVLAP LOGO SHALL NOT BE USED BY THE CLIENT TO CLAIM PRODUCT CERTIFICATION, APPROVAL, OR ENDORSEMENT BY NVLAP, NIST, OR ANY AGENCY OF THE FEDERAL GOVERNMENT.